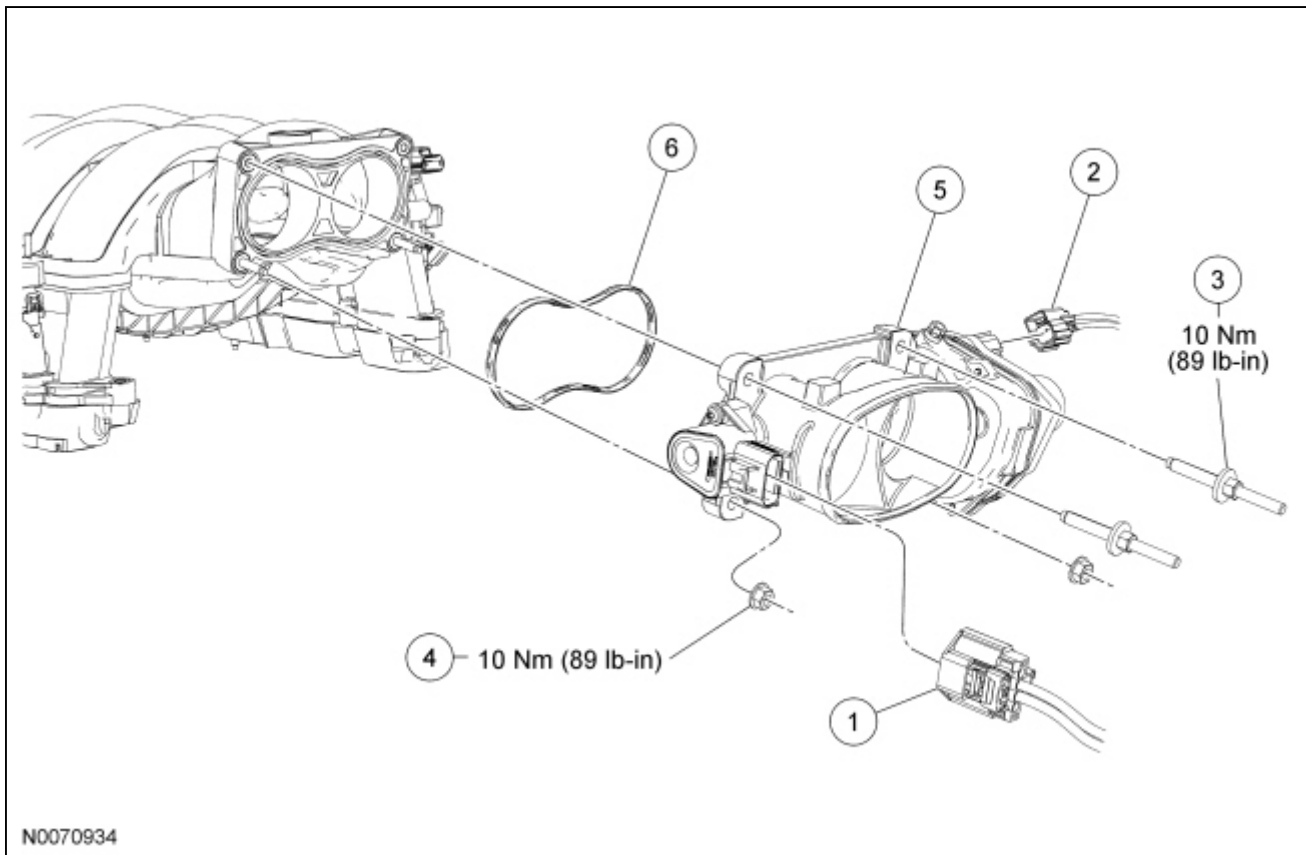


## Throttle Body



Item	Part Number	Description
1	14A464	Electronic throttle control electrical connector (part of 12B637)
2	14A464	Throttle Position (TP) sensor electrical connector (part of 12B637)
3	N806154	Throttle Body (TB) stud bolt (2 required)
4	N805320	<u>TB</u> _nut (2 required)
5	9F991	<u>TB</u>
6	9E936	<u>TB</u> _gasket

### Removal and Installation

1. Remove the Air Cleaner (ACL) outlet pipe. For additional information, refer to [Section 303-12](#).
2. Disconnect the Throttle Position (TP) sensor electrical connector.
3. Disconnect the electronic throttle control electrical connector.
4. **NOTE:** Discard the Throttle Body (TB) gasket.

Remove the 2 stud bolts, 2 nuts and the TB.

- To install, tighten to 10 Nm (89 lb-in).

5. **NOTE:** Install a new TB\_gasket.

To install, reverse the removal procedure.

---